

Welcome to English Language Arts

Contact: greenesarah@aaps.k12.mi.us

Website: greenesarah.weebly.com



Expectations of Students

- ★ Be accountable for your learning
- ★ Try your best
- ★ Share
- ★ “Be Present”
 - Be prepared (materials and attitude)

Parents & Guardians



Please...

- Encourage your student to initiate contact with me first—then follow up to make sure they did
- Encourage your student to check their grades on PowerSchool
- Check your student's planner

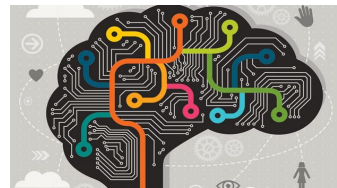
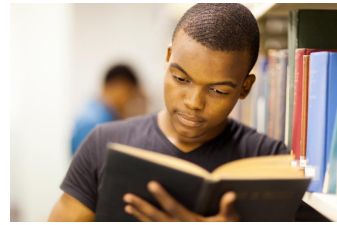
Teacher Expectations

- Create a safe classroom environment where learners with diverse needs and learning styles will be successful
- Communicate effectively with all parties
- Be transparent in grading, assignments, etc.
- Be prepared
- Be flexible
- Hold high expectations for conduct and achievement

Academic Routines

Students will ...

- Choose and read books that they enjoy for Silent Sustained Reading (SSR). Independent reading will further develop each student's: reading identity; increase their fluency, comprehension, and vocabulary; and practice metacognition.
- Develop a writing piece through the Writer's Workshop model.
- Learn how to transfer knowledge of Greek & Latin roots and affixes to other disciplines.
- Engage with their peers in in-depth discussions, problem solving, and a clarification of ideas while participating in seminars and Literature Circles.



Typical Weekly Schedule

Monday

- NF/Current Events reading (“Close Reading”)
- Seminars

Tuesday

- Unit Study (Reading or Writing)

Wednesday

- Vocabulary

Thursday & Friday

- Unit Study (Reading or Writing)

6th Grade Units of Study

Reading

- Folktales
- Fantasy
- Action & Adventure
- Independent Reading

Writing

- Narrative Writing
- Argumentative Writing
- Research Writing

Vocabulary and Speaking & Listening objectives will be taught throughout the year

8th Grade Units of Study

Reading

- Historical Fiction
- Science Fiction
- Realistic Fiction
- Independent Reading

Writing

- Narrative writing
- Real-life writing
- Research writing
- Literary Analysis

Vocabulary and Speaking & Listening objectives will be taught throughout the year

Grades



Grades will reflect a “balanced literacy” model where scores will be based on the following weights:

- Reading: 30%
- Writing: 30%
- Speaking and Listening: 20%
- Vocabulary: 20%

Citizenship

Refer to your student's planner to learn about Slauson's citizenship grades.

- A "3" describes a typical middle school student.
- A "1" or "2" means that student is a leader. This takes conscious and consistent effort.
 - This is not just about being quiet and doing what you are told. This is about being an active member of a classroom who reflects, collaborates, perseveres, and problem-solves.

Conferences



Please feel free to contact me if you would like to schedule a conference:

greenesarah@aaps.k12.mi.us

Wish List

- Post-it notes
- Index cards
- Highlighters
- Pens
- Composition notebooks
- Facial tissue
- Markers
- Pencils